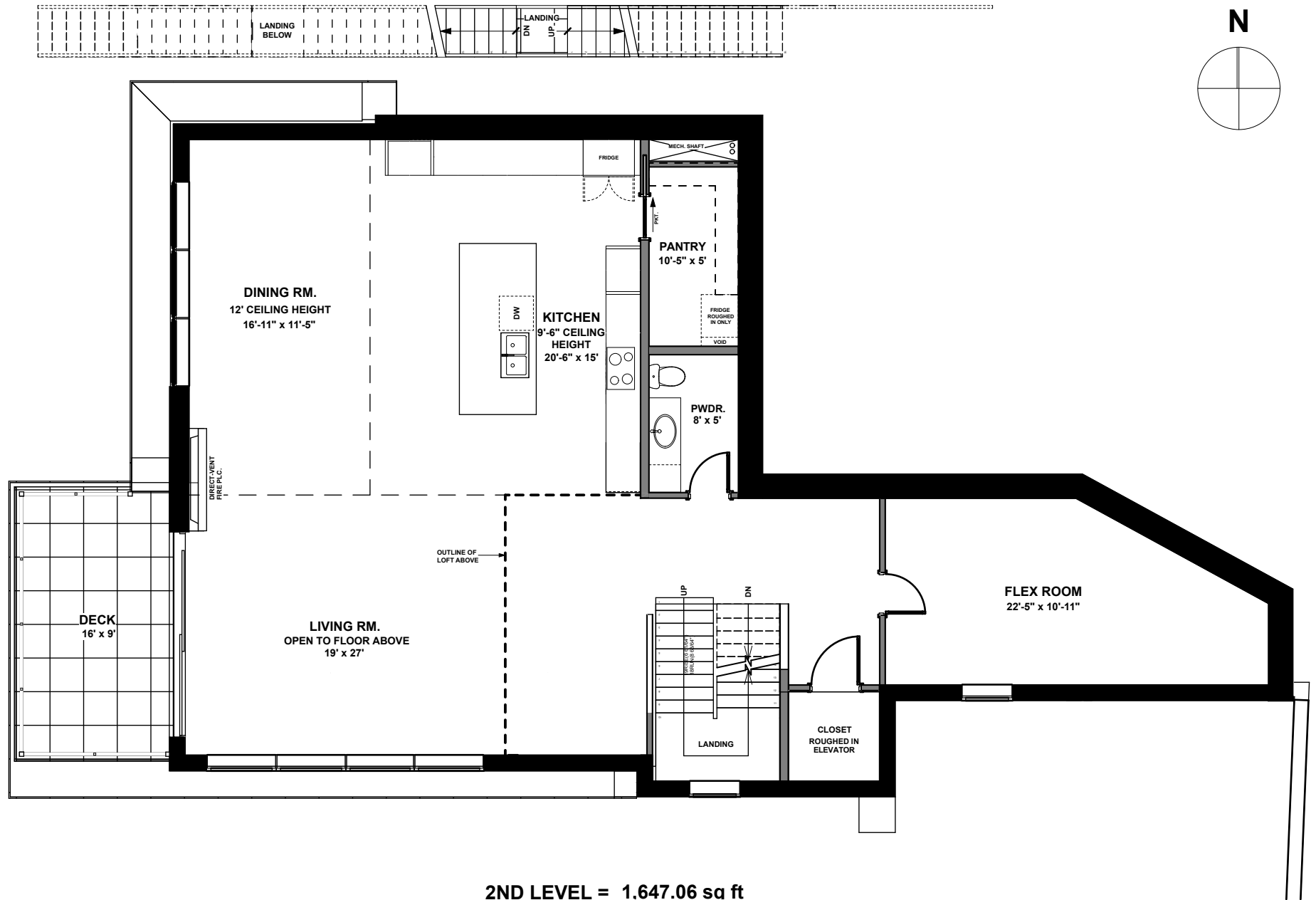
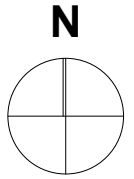
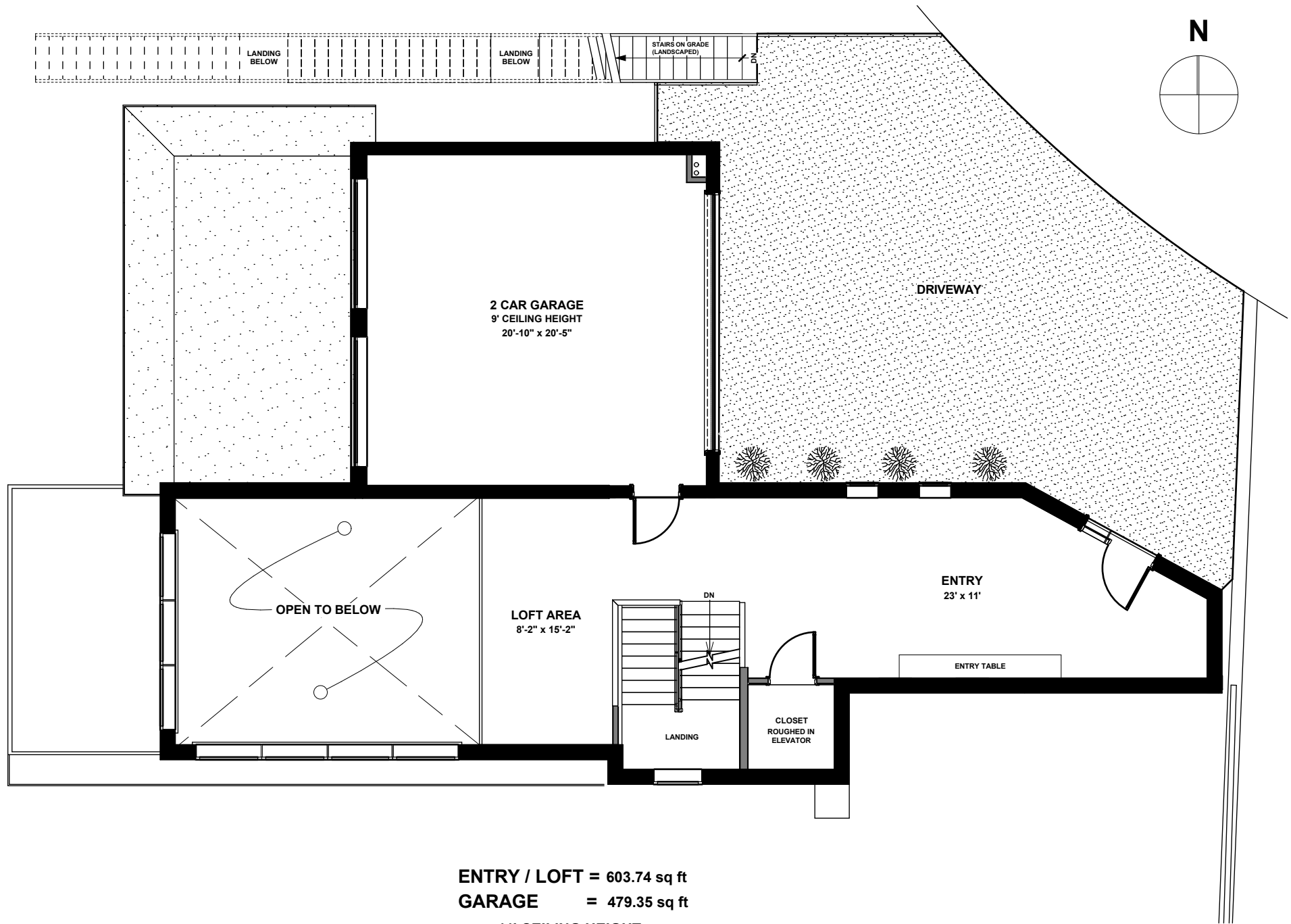
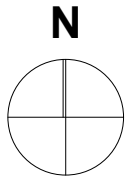


**1st LEVEL = 1,696.57 sq ft**  
**9' CEILING HEIGHT**



**2ND LEVEL = 1,647.06 sq ft**  
10' CEILING HEIGHT



**ENTRY / LOFT = 603.74 sq ft**

**GARAGE = 479.35 sq ft**

**11' CEILING HEIGHT**